

3

2008

STRATEGIC DEVELOPMENT PLAN AREAS

■ circular

Scottish Planning Series

PLANNING CIRCULAR 3 2008

**Strategic Development
Plan Areas**

November 2008
© Crown copyright 2008
ISSN 0141-514X
ISBN 978 0 7559 7317 0



PLANNING SERIES:

- **Scottish Planning Policies (SPPs)** provide statements of The Scottish Government's policy on nationally important land use and other planning matters, supported where appropriate by a locational framework.
- **Circulars**, which also provide statements of The Scottish Government's policy, contain guidance on policy implementation through legislative or procedural change.
- **Planning Advice Notes (PANs)** provide advice on good practice and other relevant information.

Statements of The Scottish Government's policy contained in SPPs and Circulars are material considerations to be taken into account in development plan preparation and development management.

Existing National Planning Guidelines (NPPGs) have continued relevance to decision making, until such time as they are replaced by a SPP. The term SPP should be interpreted as including NPPGs.

Statements of The Scottish Government's location-specific planning policy, for example the West Edinburgh Planning Framework, have the same status in decision making as SPPs.

The National Planning Framework sets out the strategy for Scotland's long-term spatial development. It has the same status as SPPs and provides a national context for development plans and planning decisions and the ongoing programme of The Scottish Government, public agencies and local government.

Important Note: In the interests of brevity and conciseness, SPPs do NOT repeat policy across thematic boundaries. Each SPP takes as read the general policy in SPP October 2008 and highlights the other SPPs where links to other related policy will be found. The whole series of SPPs should be taken as an integral policy suite and read together.

CONTENTS

	Paragraph
Introduction	1
Background	3
The Strategic Development Plan Areas	6
Glasgow and the Clyde Valley Strategic Development Plan Area	8
Aberdeen City and Shire Strategic Development Plan Area	9
Dundee, Perth, Angus and North Fife Strategic Development Plan Area	10
Edinburgh and South East Scotland Strategic Development Plan Area	11

INTRODUCTION

1. This Circular constitutes Scottish Ministers' determination of the boundaries of the following strategic development plan (SDP) areas:
 1. Glasgow and the Clyde Valley;
 2. Aberdeen City and Shire;
 3. Dundee, Perth, Angus and North Fife; and
 4. Edinburgh and South East Scotland.
2. In making this determination, Scottish Ministers are seeking to enable the strategic development planning authorities (SDPAs) to proceed confidently with preparatory work on the first SDPs.

BACKGROUND

3. An important strand of the modernisation of the Scottish planning system introduced by the Planning etc. (Scotland) Act 2006 (the 2006 Act) was the replacement of structure plans by strategic development plans (SDPs). Section 2 of the 2006 Act introduced a new section 4(1) into the Town and Country Planning (Scotland) Act 1997 (the 1997 Act) which allowed Ministers to designate groups of planning authorities as strategic development planning authorities (SDPAs), tasked with preparing and reviewing SDPs. Scottish Ministers designated the following four such groupings in the SDPA Designation Orders 2008 which came into force on 25 June 2008:
 1. East Dunbartonshire, East Renfrewshire, Glasgow City, Inverclyde, North Lanarkshire, Renfrewshire, South Lanarkshire and West Dunbartonshire Councils;
 2. Aberdeen City and Aberdeenshire Councils;
 3. Angus, Dundee City, Fife and Perth & Kinross Councils;
 4. City of Edinburgh, East Lothian, Fife, Midlothian, Scottish Borders and West Lothian Councils.



4. Section 5(1) of the 1997 Act, (as introduced by section 2 of the 2006 Act) required the SDPAs to submit proposed SDP area boundaries to Scottish Ministers within 3 months of designation. Scottish Ministers issued guidance on appropriate plan boundaries in Planning Circular 2/2008, which indicated that widely drawn boundaries that matched local authority boundaries were likely to be the simplest solution, with the exception of national park areas which were expected to be excluded. The SDPAs' submissions were all duly received and are available to view on the Scottish Government's website¹. All the SDPAs carried out some form of consultation on their proposals and the outcome of these consultations are included in the submissions.
5. Section 5(3) of the 1997 Act, (as introduced by section 2 of the 2006 Act) allows Scottish Ministers to make a determination as to the boundaries of strategic development plan (SDP) areas.

THE STRATEGIC DEVELOPMENT PLAN AREAS

6. Ministers are content that the boundaries submitted by the SDPAs provide an appropriate basis for strategic planning in these city-regions. They note that the proposed boundaries were subject to consultation and reflect the guidance set out in Circular 2/2008. This determination therefore matches the boundaries proposed by the SDPAs themselves.
7. Scottish Ministers have asked Scottish Natural Heritage to report on the proposal to extend the Cairngorms National Park into parts of eastern and highland areas of Perth and Kinross Council. If this proposal is implemented, there may be a need to review the area of the Dundee, Perth, Angus and North Fife SDP area in due course. However, no such review will be carried out until after the approval of the first SDP for this area.

GLASGOW AND THE CLYDE VALLEY STRATEGIC DEVELOPMENT PLAN AREA

8. The Glasgow and the Clyde Valley Strategic Development Plan Area is illustrated on Map 1, and constitutes the administrative areas of East Dunbartonshire, East Renfrewshire, Glasgow City, Inverclyde, North Lanarkshire, Renfrewshire, South Lanarkshire and West Dunbartonshire Councils, excepting the part of West Dunbartonshire Council that formed part of the Loch Lomond & the Trossachs National Park on 11 November 2008.

¹ <http://www.scotland.gov.uk/Topics/Built-Environment/planning/National-Planning-Policy/themes/dev-plan>

ABERDEEN CITY AND SHIRE STRATEGIC DEVELOPMENT PLAN AREA

9. The Aberdeen City and Shire Strategic Development Plan Area is illustrated on Map 2, and constitutes the administrative areas of Aberdeen City and Aberdeenshire Councils excepting the part of Aberdeenshire Council that formed part of the Cairngorms National Park on 11 November 2008.

DUNDEE, PERTH, ANGUS AND NORTH FIFE STRATEGIC DEVELOPMENT PLAN AREA

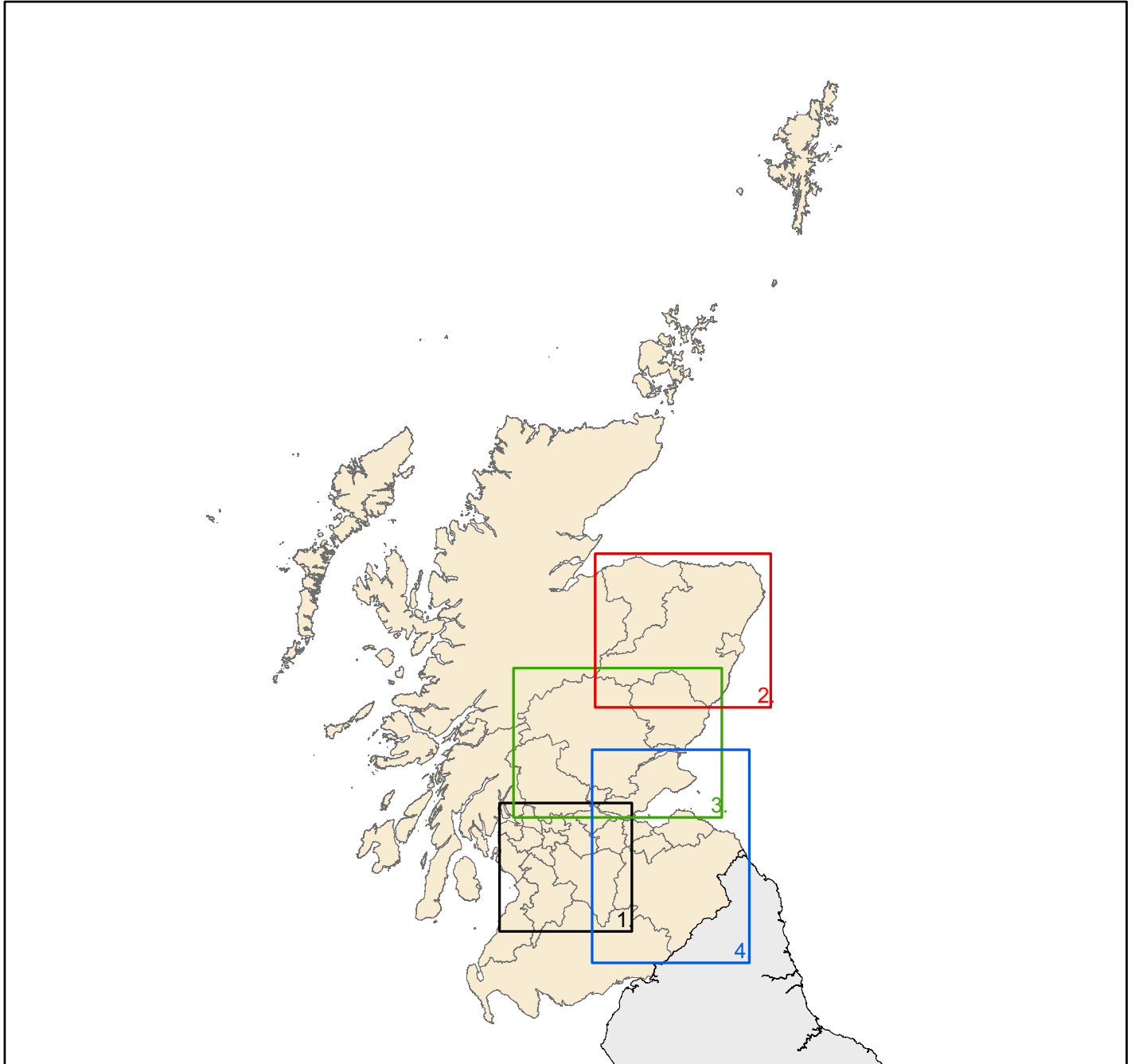
10. The Dundee, Perth, Angus and North Fife Strategic Development Plan Area is illustrated on Map 3, and constitutes the administrative areas of Angus, Dundee City and Perth & Kinross Councils and that part of Fife Council illustrated on Map 3, excepting the part of Angus Council that formed part of the Cairngorms National Park on 11 November 2008, and the part of Perth & Kinross Council that formed part of the Loch Lomond & the Trossachs National Park on 11 November 2008.

EDINBURGH AND SOUTH EAST SCOTLAND STRATEGIC DEVELOPMENT PLAN AREA

11. The Edinburgh and South East Scotland Strategic Development Plan Area is illustrated on Map 4, and constitutes the administrative areas of City of Edinburgh, East Lothian, Midlothian, Scottish Borders and West Lothian Councils and that part of Fife Council illustrated on Map 4.



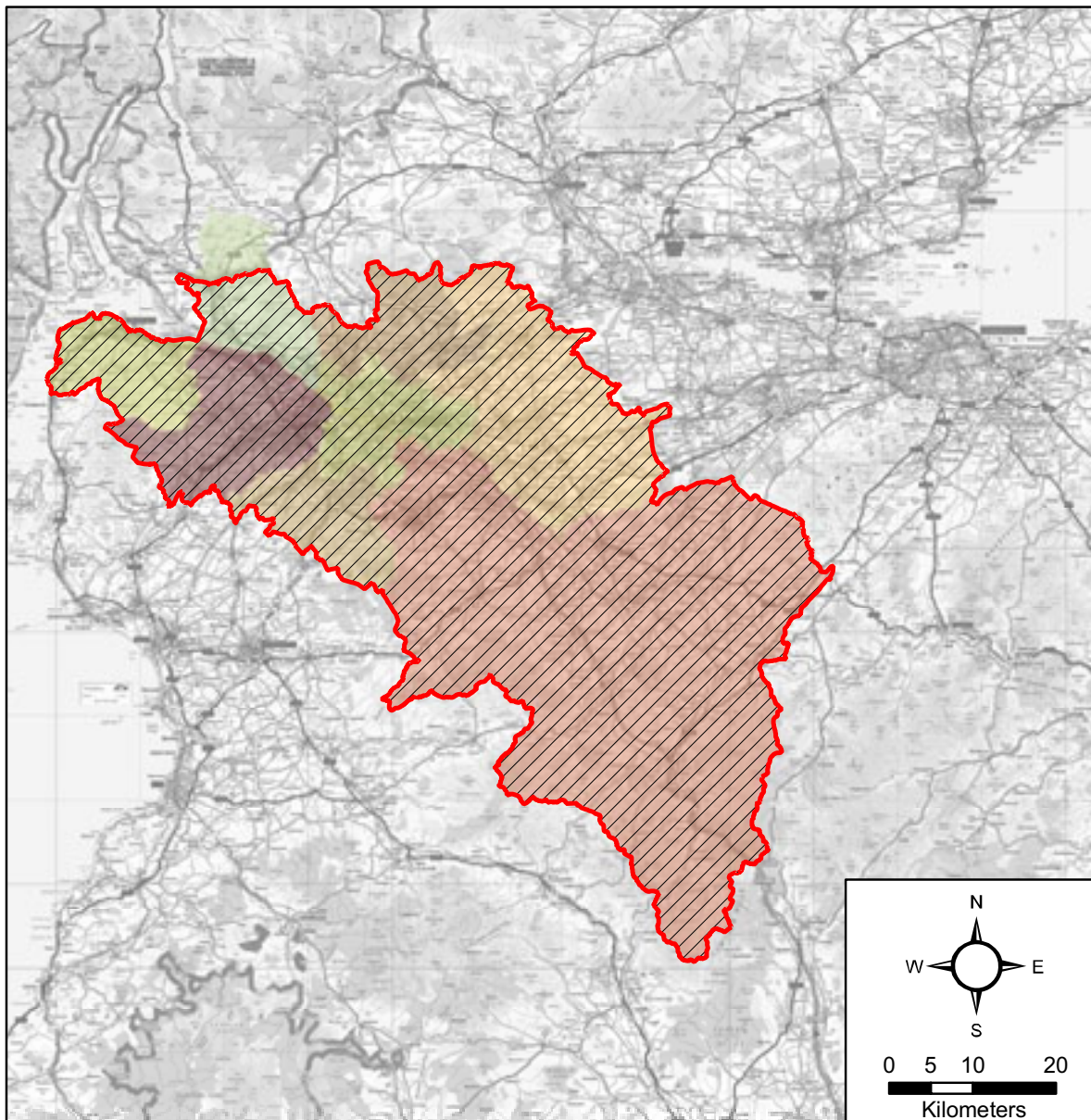
Strategic Development Plan areas: index map












Legend

- Map 1. Glasgow and the Clyde Valley Strategic Development Plan area**
- Map 2. Aberdeen City and Shire Strategic Development Plan area**
- Map 3. Dundee, Perth, Angus and North Fife Strategic Development Plan area**
- Map 4. Edinburgh and South East Scotland Strategic Development Plan area**

Map 1: Glasgow and the Clyde Valley Strategic Development Plan area



Legend

- | | | | | | |
|---|---------------------------------|---|-------------------|---|---------------------|
|  | Strategic Development Plan area |  | Inverclyde |  | West Dunbartonshire |
|  | East Dunbartonshire |  | North Lanarkshire | | |
|  | East Renfrewshire |  | Renfrewshire | | |
|  | Glasgow City |  | South Lanarkshire | | |

Source: The Scottish Government

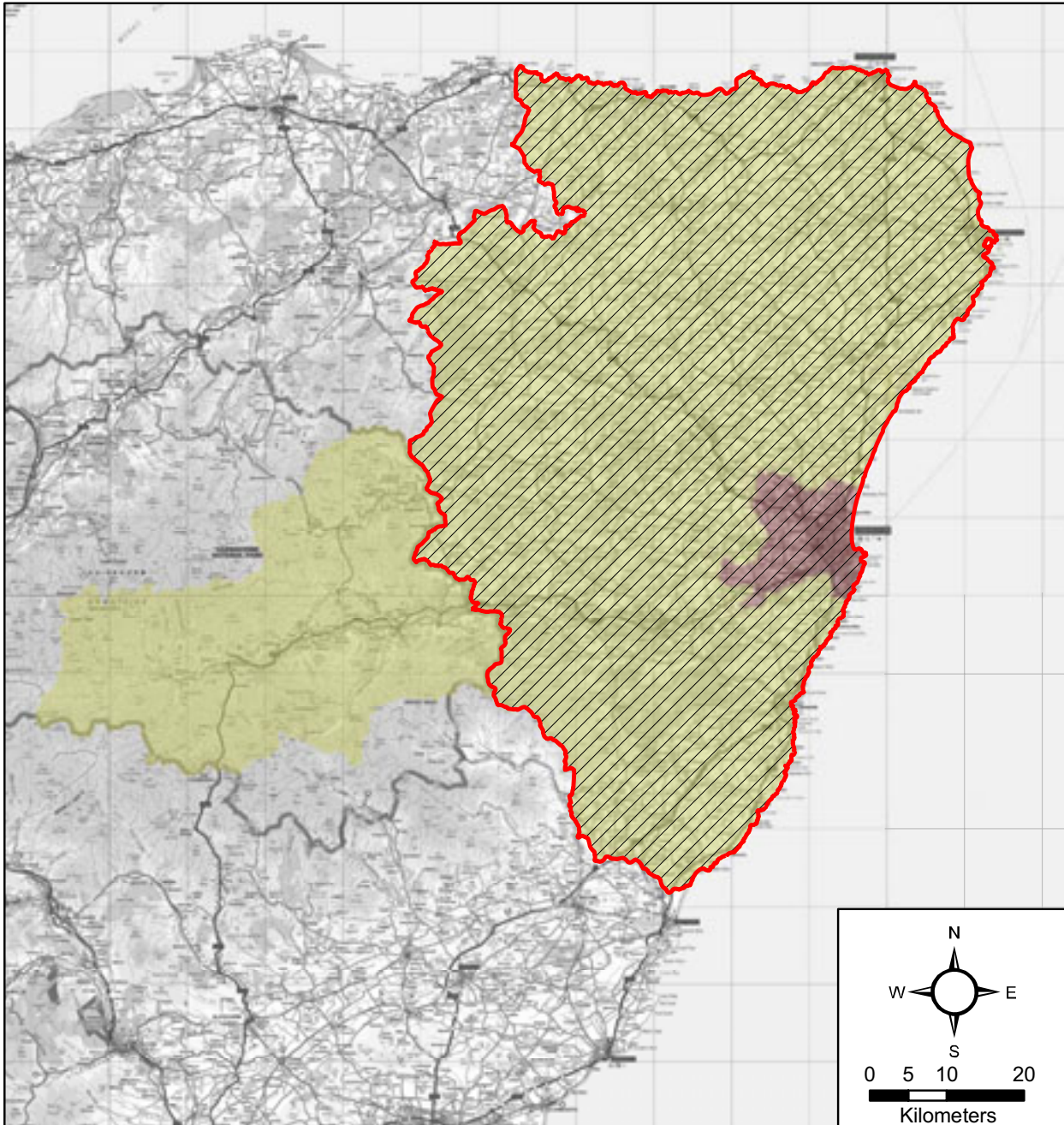
Due to OS licence conditions you/your agent may only use this map for official business dealings with The Scottish Government. If you wish to use the map for other uses, you must first obtain a separate licence from OS.

Crown Copyright © The Scottish Government 100020540 2008

Produced 07.10.2008




Map 2: Aberdeen City and Shire Strategic Development Plan area



Legend

 Strategic Development Plan area

 Aberdeen City

 Aberdeenshire

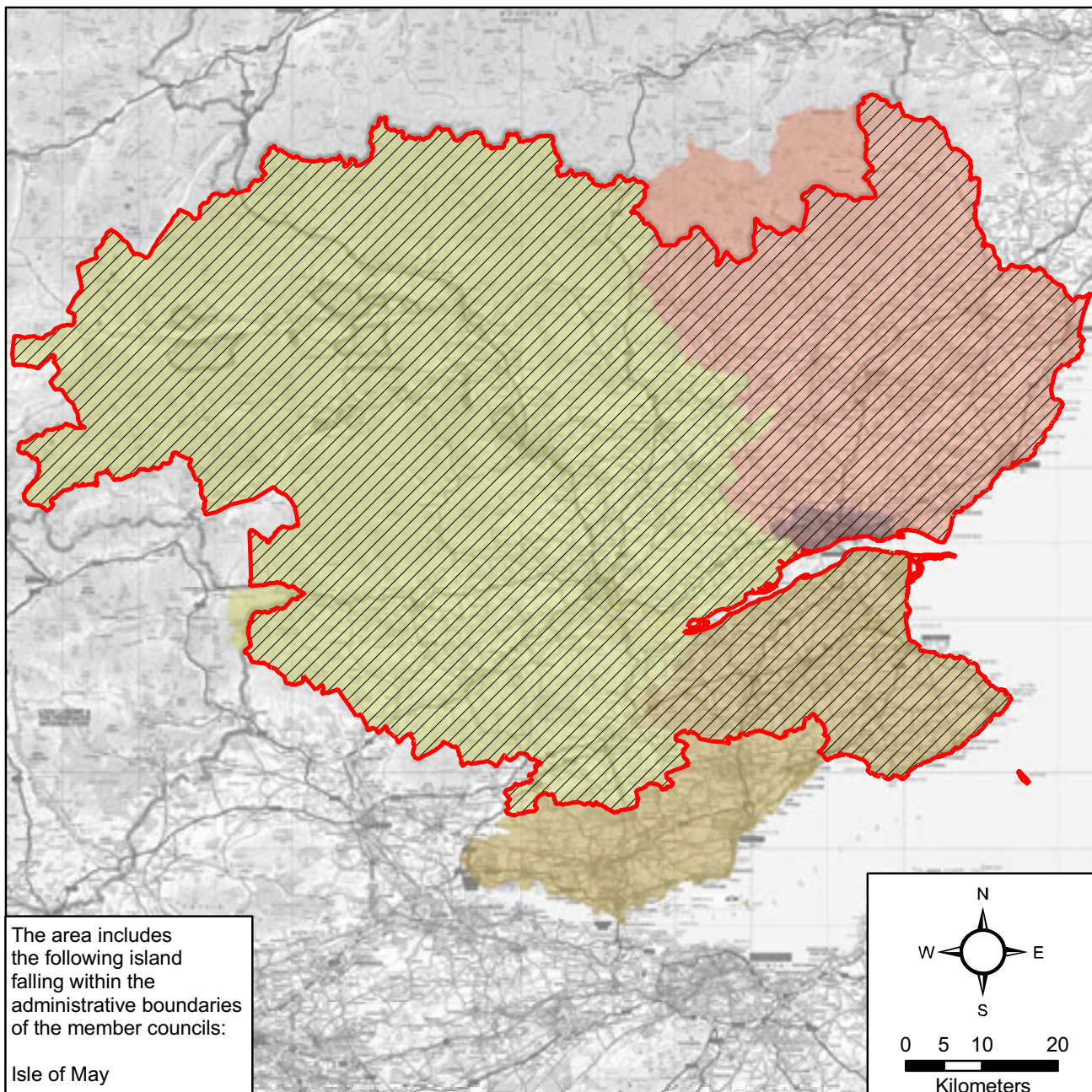
Source: The Scottish Government

Due to OS licence conditions you/your agent may only use this map for official business dealings with The Scottish Government. If you wish to use the map for other uses, you must first obtain a separate licence from OS.

Crown Copyright © The Scottish Government 100020540 2008






Produced 07.10.2008

Map 3: Dundee, Perth, Angus and North Fife Strategic Development Plan area



The area includes the following island falling within the administrative boundaries of the member councils:
Isle of May

Legend

 Strategic Development Plan area	 Fife
 Angus	 Perth & Kinross
 Dundee City	

Source: The Scottish Government

Due to OS licence conditions you/your agent may only use this map for official business dealings with The Scottish Government. If you wish to use the map for other uses, you must first obtain a separate licence from OS.

Crown Copyright © The Scottish Government 100020540 2008

Produced 07.10.2008

ISBN 978-0-7559-7317-0



9 780755 973170